

## Montagearten; Bauhöhe 7.4 mm

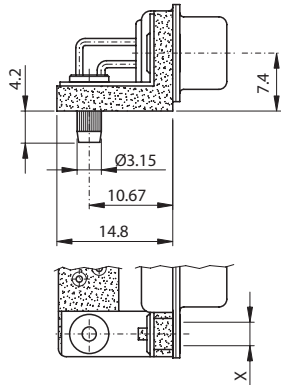
Für Einpresstift 90°, 9.4 mm (YC)



## Assemblies; mounting height 7.4 mm

For press-fit solder pin 90°, 9.4 mm (YC)

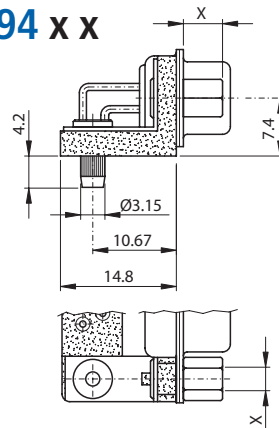
### M94 x



Kunststoffwinkel mit Erdungswinkel und Po.F.  
Plastic bracket with ground strap and Po.F.

M94 D3	Niete / rivet	Ø 3.1 mm
M94 UN	Niete / back nut	UNC4-40
M94 M3	Niete / back nut	M3

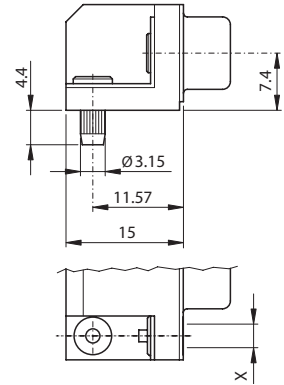
### M94 x x



Kunststoffwinkel mit Erdungswinkel und Po.F.  
Plastic bracket with ground strap and Po.F.

M96 UN B5	Niete / back nut	UNC4-40
	Schraube / screw	5 mm
M96 UN B6	Niete / back nut	UNC4-40
	Schraube / screw	6 mm
M96 M3 B5	Niete / back nut	M3
	Schraube / screw	5 mm
M96 M3 B6	Niete / back nut	M3
	Schraube / screw	6 mm

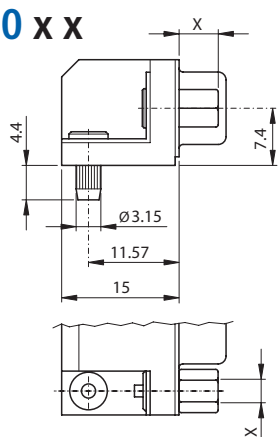
### M90 x



Kunststoffwinkel mit Erdungswinkel und Po.F.  
Plastic bracket with ground strap and Po.F.

M90 D3	Niete / rivet	Ø 3.1 mm
M90 UN	Niete / back nut	UNC4-40
M90 M3	Niete / back nut	M3

### M90 x x



Kunststoffwinkel mit Erdungswinkel und Po.F.  
Plastic bracket with ground strap and Po.F.

M90 UN B5	Niete / back nut	UNC4-40
	Schraube / screw	5 mm
M90 UN B6	Niete / back nut	UNC4-40
	Schraube / screw	6 mm
M90 M3 B5	Niete / back nut	M3
	Schraube / screw	5 mm
M90 M3 B6	Niete / back nut	M3
	Schraube / screw	6 mm

