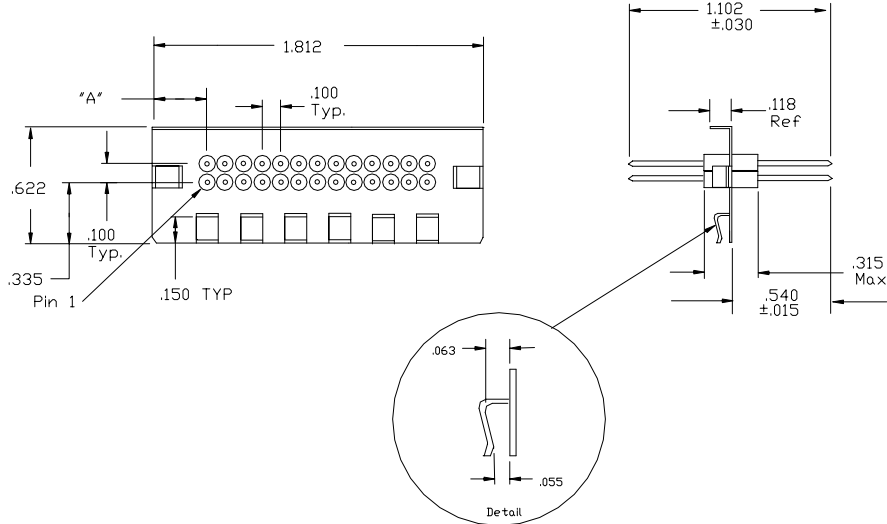


FP07 Style Filter Plate



Materials:

Plate: Copper Alloy, Matte Tin Plated
 Leads: Copper Alloy, .025" ± .002" Dia, Gold Plated

Working Voltage: 100 VDC
 Max. Current: 5 Amps DC
 Insulation Resistance @ 25 °C: 10 GΩ Min.
 Operating Temperature: -55 °C - +125 °C

Filtering Options: See Filter Options Chart
 Lead Configurations: See Lead Options Chart

Ordering Information:

No. of Filtered Lines Per Row	"A"
1	.906
2 or 3	.806
4 or 5	.706
6 or 7	.606
8 or 9	.506
10 or 11	.406
12 or 13	.306

Style	# of Rows	# of Filters Per Row	Lead Configuration	Filter Design
FP07 -	2 (1 or 2)	13 (01 thru 13)	- (S,L,R, or B)	- Q (See Filter Options)

Example: Part Number: FP07 -213-SQ
 Description: FP07 Style Plate, 2 rows of 13, Straight Leads, 1000 pF "Pi" Circuit.

Unless otherwise specified, single row designs utilize the bottom row.
 For custom lead configurations consult the factory.

CALL OUR SALES DEPARTMENT FOR MORE INFORMATION OR VARIATIONS OF THIS PRODUCT.

Corry Micronics, Inc. One Plastics Rd. - Corry, PA 16407 (814) 664-7728 Fax (814) 664-4582

Corry Micronics Inc. herein referred to CMI, believes this information to be accurate, but makes no warranties, expressed or implied as to the accuracy of this document. CMI assumes no liability for any injury, loss, damage, direct or consequential arising from the use of our products. User assumes all risk whatsoever in connection with it's intended use. CMI also reserves the right to change this document without notice.