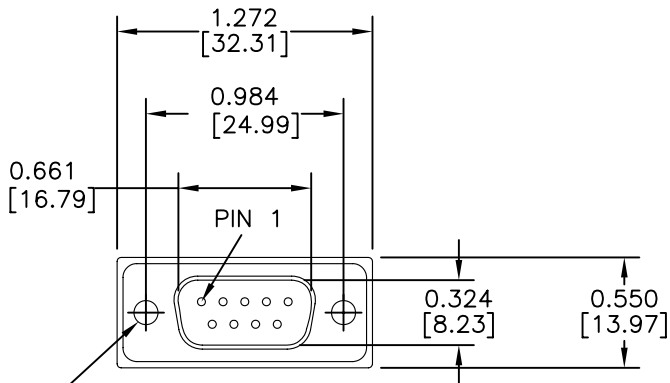
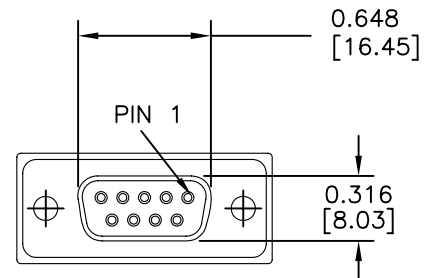
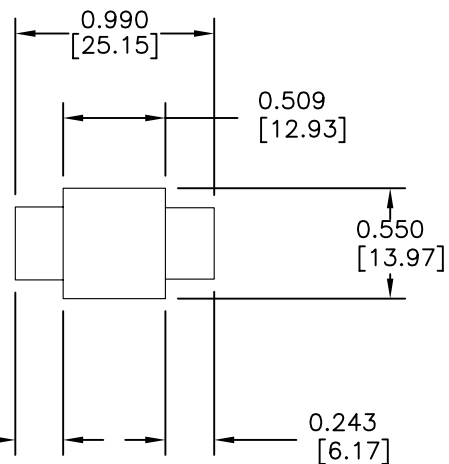


SIZE	FILTER TYPE	CAPACITANCE (pF)		VOLTAGE		CURRENT RATING	CONTACT RESISTANCE	MINIMUM ATTENUATION (dB)							
		MIN	MAX	WVDC	DWV			5 MHz	10 MHz	20 MHz	50 MHz	100 MHz	200 MHz	500 MHz	1 GHz
9	C	656	984	100	250	5A	.010 Ohms		4	9	16	22	28	35	39



MOUNTING HOLE FOR #4-40 THUMBSCREW 2 PLACES

9 PIN MALE



9 PIN FEMALE

NOTES

- 1) SHELLS: STEEL, TIN PLATED.
- 2) CONTACTS: COPPER ALLOY, GOLD PLATED, .000010" TYP.
- 3) INSULATORS AND BACK COVER: PLASTIC, UL94-V0.
- 4) MATING SHELL (MALE SIDE) HAS GROUNDING DIMPLES.
- 5) OPERATING TEMPERATURE: -55°C TO +125°C.
- 6) MARKING: PART NUMBER IS INK STAMPED ON REAR COVER.
- 7) EACH UNIT INCLUDES TWO #4-40 THUMBSCREWS (NOT SHOWN). EACH THUMBSCREW IS CAPTIVE WITHIN THE MOUNTING HOLES.

DATE	C.O. REV	08/12/05	0																					
------	----------	----------	---	--	--	--	--	--	--	--	--	--	--	--	--	--	--	--	--	--	--	--	--	--

ALL DIMENSIONS ARE IN INCHES (mm)

GENERAL TOLERANCES UNLESS OTHERWISE SPECIFIED

DECIMAL: ± .025 [.64]
ANGLES: ± 1°

CAGE CODE 15717

CORRY Micronics One Plastics Rd. - Corry, PA 16407
(814) 664-7728 FAX (814) 664-4582 www.cormic.com

Dwg By: RPM Date: 08/12/05 Chk'd By: RPM
Scale: 1X File: Sheet:

9 PIN, ADAPTER, 820 PF "C"
DSC09-300-E00