

### **CDMA&GSM-02**

**Features:**

Specially designed for CDMA network, GSM network repeater, base station and indoor coverage system

Confirms to Uicom Technical Standards

Insertion Loss lower than 0.8dB

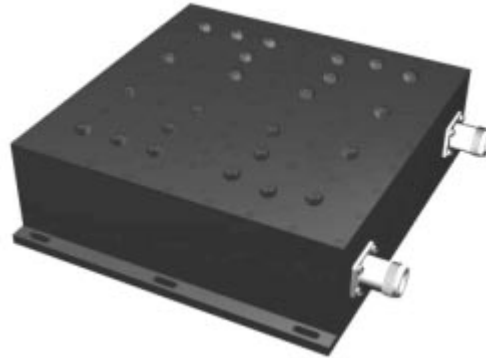
High Power Handling

**Applications:**

CDMA system, GSM repeater, base station

CDMA, GSM indoor coverage system

Communication test equipment



**Technical Specifications:**

Frequency Range: 825 to 880MHz

909 to 960MHz

Insertion Loss: 0.8dB maximum

0.5dB typical

Passband ripple: 0.5dB p-p maximum

Return Loss: 1.4 maximum

Stopband attenuation:

≥70dB 825-880MHz relative 909 ~ 960MHz

≥65dB 909-960MHz relative 825 ~ 880MHz

**Operating Temperature:** -30 to +55 °C

**Storage Temperature:** -40 to +85 °C

**Operating Humidity:** 0 to 90%, relative

**Connectors:** N-K

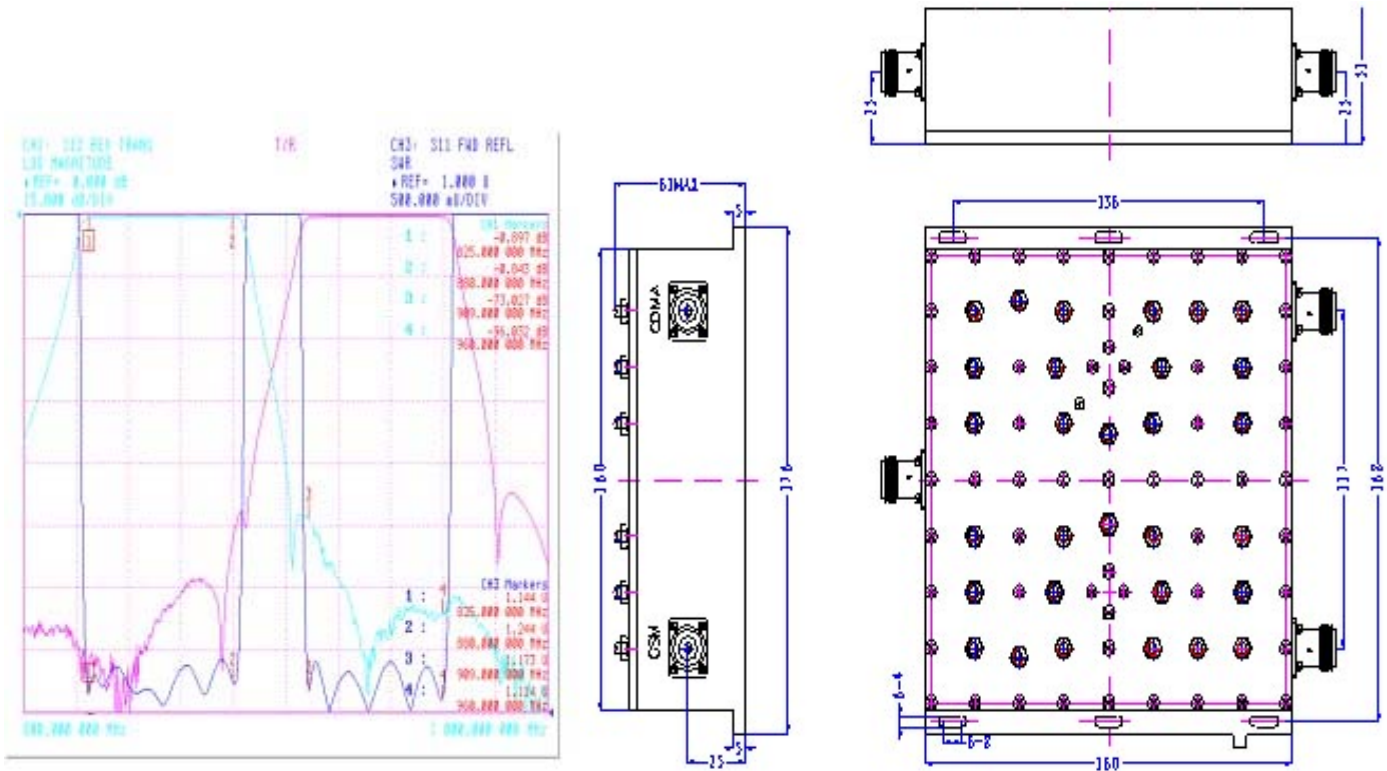
**Default color:** paint in deep gray

**CALL OUR SALES DEPARTMENT FOR MORE INFORMATION OR VARIATIONS OF THIS PRODUCT.**

**Corry Micronics, Inc. One Plastics Rd. - Corry, PA 16407**  
**(814) 664-7728 Fax (814) 664-4582 [www.cormic.com](http://www.cormic.com)**

Corry Micronics Inc. herein referred to CMI, believes this information to be accurate, but makes no warranties, expressed or implied as to the accuracy of this document. CMI assumes no liability for any injury, loss, damage, direct or consequential arising from the use of our products. User assumes all risk whatsoever in connection with it's intended use. CMI also reserves the right to change this document without notice.

**Outline Drawing:**



**Note:**

If no special requirement is mentioned on order, default finish is painted in deep gray. Options include completely or partially painted or unpainted. CMI reserves the right of revising this file and not notifying in advance.

**CALL OUR SALES DEPARTMENT FOR MORE INFORMATION OR VARIATIONS OF THIS PRODUCT.**

**Corry Micronics, Inc. One Plastics Rd. - Corry, PA 16407  
(814) 664-7728 Fax (814) 664-4582 [www.cormic.com](http://www.cormic.com)**

Corry Micronics Inc. herein referred to CMI, believes this information to be accurate, but makes no warranties, expressed or implied as to the accuracy of this document. CMI assumes no liability for any injury, loss, damage, direct or consequential arising from the use of our products. User assumes all risk whatsoever in connection with it's intended use. CMI also reserves the right to change this document without notice.