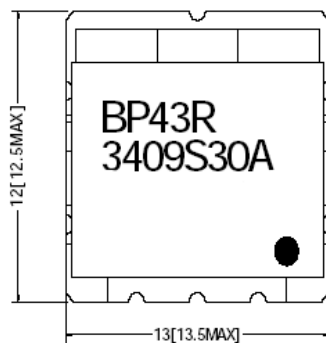


RF FILTER SPECIFICATION

PART NO. BP43R3409S30A

Electrical Specifications			
Item	Parameter	General Specification	
1	Center Frequency	3409 MHz	
2	Bandwidth (BW)	fo ±15 MHz	
3	Insertion ss in BW	4.0 dB max.	
4	Ripple in BW	0.8 dB max.	
5	VSWR	2.0 max.	
6	Group Delay Variation	3.0 nsec max.	
7	Input power	1 watt max.	
8	Attenuation	Frequency	Specification
	□ Absolute Value	3131 MHz	50 dB min.

TOP VIEW



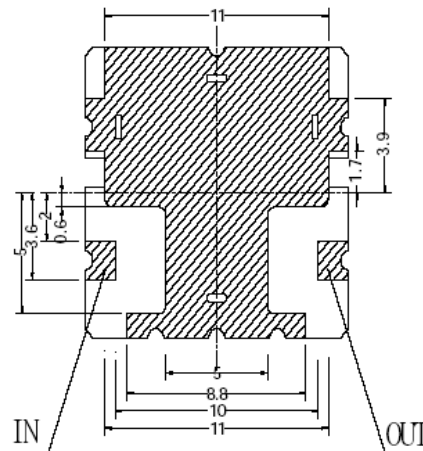
TOLERANCE : .X : ±0.3
.XX : ±0.15

DIMENSION UNIT : mm

● INPUT PORT

▨ COPPER AREA

BOTTOM VIEW



CALL OUR SALES DEPARTMENT FOR MORE INFORMATION OR VARIATIONS OF THIS PRODUCT.

**Corry Micronics, Inc. One Plastics Rd. - Corry, PA 16407
(814) 664-7728 Fax (814) 664-4582 www.cormic.com**

Corry Micronics Inc. herein referred to CMI, believes this information to be accurate, but makes no warranties, expressed or implied as to the accuracy of this document. CMI assumes no liability for any injury, loss, damage, direct or consequential arising from the use of our products. User assumes all risk whatsoever in connection with it's intended use. CMI also reserves the right to change this document without notice.