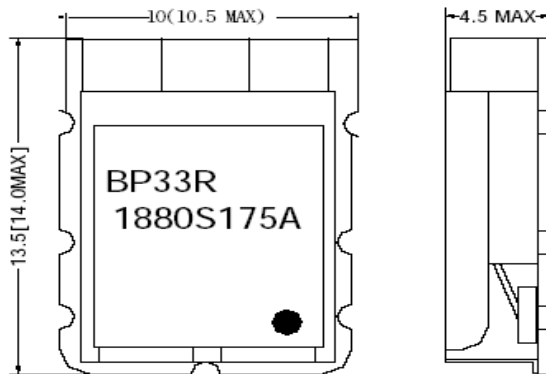


RF FILTER SPECIFICATION

Part No. BP33R1880S175A

Electrical Specifications			
Item	Parameter	General Specification	CMI's Specification
1	Center Frequency	1880 MHz	1880 MHz
2	Bandwidth (BW)	1795 - 1970 MHz	1795 - 1970 MHz
3	Insertion loss	1795 - 1970 MHz	3.0 dB max.
		1850 - 1910 MHz	0.8 dB max.
4	Ripple in BW	0.3 dB max.	0.5 dB max.
5	VSWR	1.5 max.	1.5 max.
6	Input power	1 watt max.	1 watt max.
7	Attenuation □ Absolute Value	30 dB min. at 1350 MHz	30 dB min. at 1350 MHz
		30 dB min. at 1665 MHz	18 dB min. at 1665 MHz
		5 dB min. at 2050 MHz	5 dB min. at 2050 MHz
		40 dB min. at 3000 MHz	30 dB min. at 3000 MHz
		40 dB min. at 3800 MHz	20 dB min. at 3800 MHz

TOP VIEW

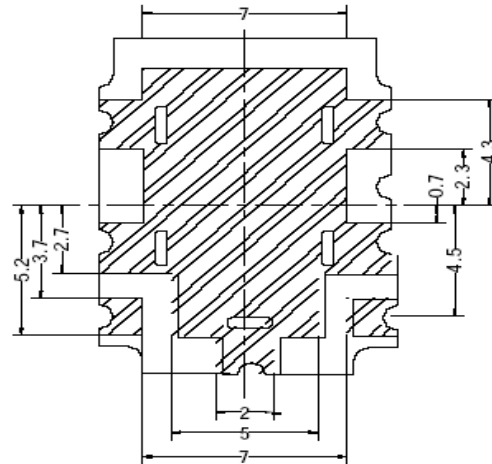


Tolerance : .X ± 0.3
 .XX ± 0.15

Dimension unit : mm

● Input port

BOTTOM VIEW



CALL OUR SALES DEPARTMENT FOR MORE INFORMATION OR VARIATIONS OF THIS PRODUCT.

**Corry Micronics, Inc. One Plastics Rd. - Corry, PA 16407
 (814) 664-7728 Fax (814) 664-4582 www.cormic.com**

Corry Micronics Inc. herein referred to CMI, believes this information to be accurate, but makes no warranties, expressed or implied as to the accuracy of this document. CMI assumes no liability for any injury, loss, damage, direct or consequential arising from the use of our products. User assumes all risk whatsoever in connection with it's intended use. CMI also reserves the right to change this document without notice.